

BITUTHENE[®] Installation

Product Description

BITUTHENE[®] Liquid Membranes are two-component asphalt-modified urethanes and include Bituthene LM (trowel grade) for vertical applications and detailing and Bituthene Deck Prep (pourable grade) for horizontal applications.

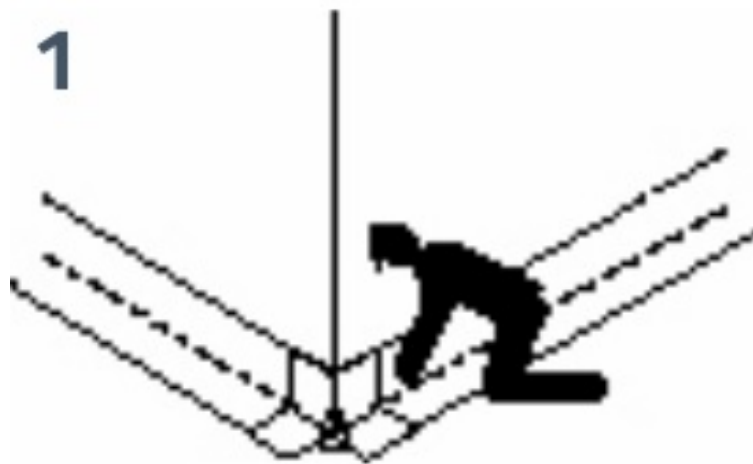
Surface Preparation

All surfaces should be clean, dry, reasonably smooth and free from sharp protrusions and hollows. A stiff brush should be used to remove dust and all other contaminants.

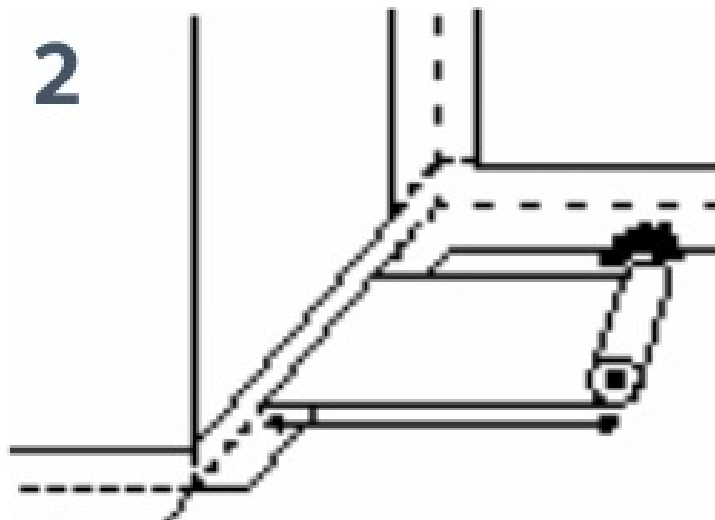
Priming

Where priming is required a single coat of primer should be applied using a brush or natural fibre roller at an application rate of up to 6 - 8m² / litre depending on porosity. The primer must be dry before Bituthene is applied.

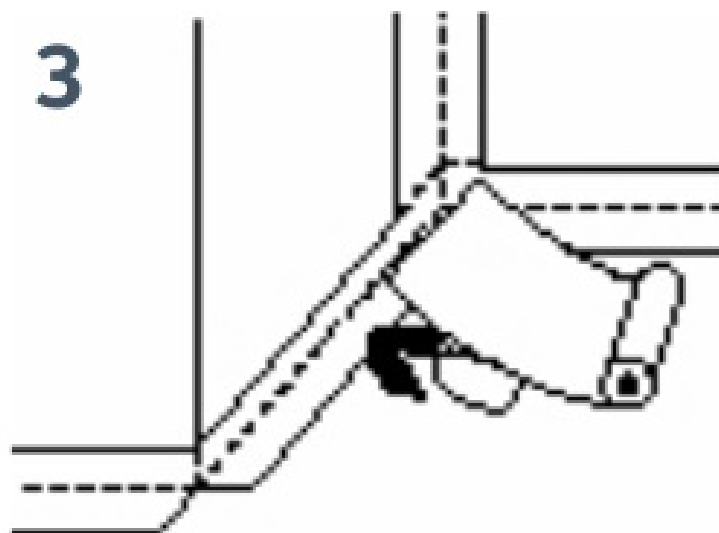




Remove all packaging from the Bituthene. Where specified, cut the required number of corner pieces and 300mm wide reinforcing strips from the roll and apply
- see overleaf for details.



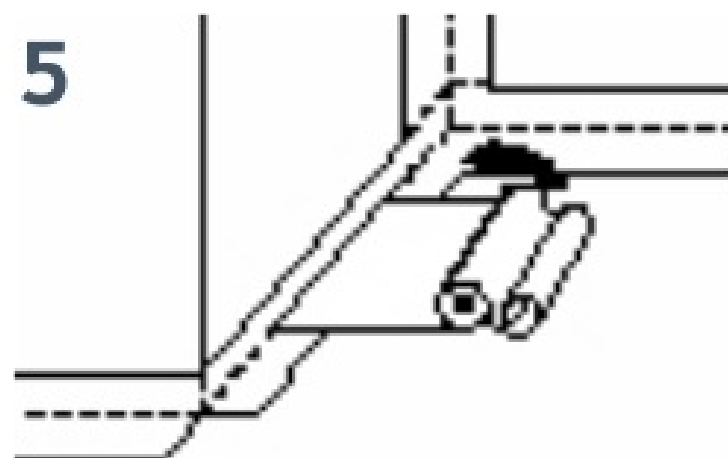
Horizontal Surfaces: Align the roll on the surface to be waterproofed with overlaps as specified and unroll approximately two metres.



Leaving the roll in position peel back approx one metre of release paper and fold back.



Maintaining alignment, smooth the exposed self adhesive portion of Bituthene onto the surface



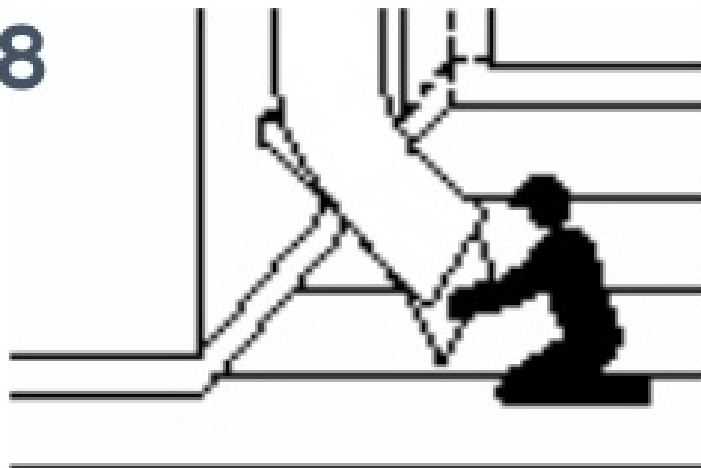
Rewind the roll, maintaining tension, so that the folded back portion of release paper can be picked up

6

Pull back on the release paper slowly unrolling the Bituthene, brushing the membrane onto the surface to exclude trapped air and to ensure overall bond.

7

Roll all overlaps firmly with a Bituthene Lap Roller to ensure continuity of the Bituthene.

8

Vertical Surfaces: Cut the Bituthene to length, apply and roll overlaps. At the top of walls Bituthene should be suitably anchored or terminated in a chase pointed with Bituthene Mastic.



Where Bituthene is to be temporarily left exposed on vertical surfaces battening may be necessary to prevent slippage.

battening and fully cover with a subsequent layer of Bituthene.

Protection to Bituthene

Where protection to the Bituthene is required this should be installed as soon as possible after the membrane has been applied. Any areas of Bituthene which are accidentally damaged should be patched, with the same grade of Bituthene, overlapping the damaged area by a minimum of the overlap dimensions shown on separate data sheets.

Bituthene: Application of Corner Pieces and Reinforcing Strips

Where specified, corners should be dressed with corner pieces as detailed below and changes of direction reinforced with 300mm wide strips of Bituthene applied centrally about the line of the junction prior to the application of the overall waterproofing. Corner pieces and reinforcing strips are cut directly from unrolled lengths of Bituthene before the release paper is removed, using a sharp Stanley Knife and a straight edge.

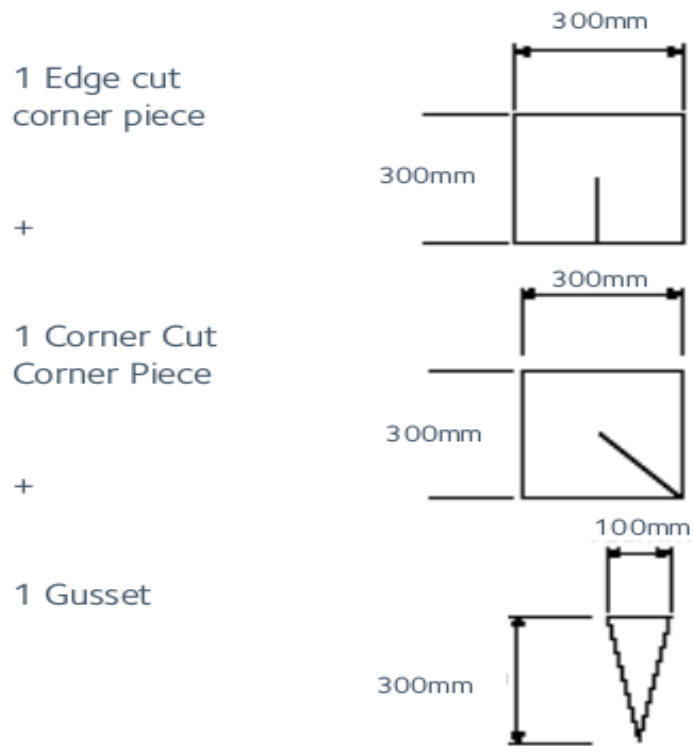
Application Sequence

STEP 1

Prepare and prime surfaces as recommended overleaf.

STEP 2

Cut the required number of corner pieces and 300mm (approximately) wide reinforcing strips. For each corner you will require:

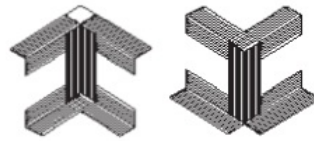


STEP 3

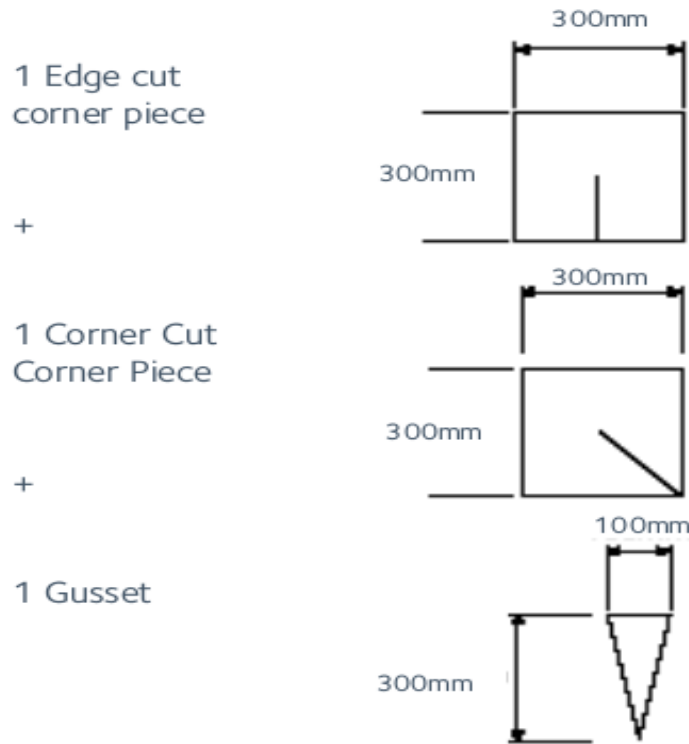
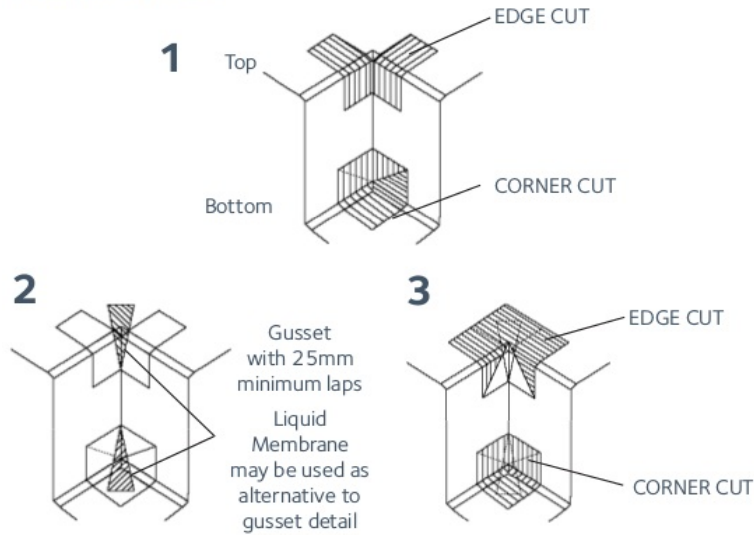
Apply Corner Details. Corner pieces should be firmly smoothed on to the surface to exclude trapped air and to ensure overall bond. To facilitate application, corner pieces may be prefolded to the required profile and the release paper removed in stages as the exposed self-adhesive portion is applied to the surface.

STEP 4

Apply 300mm (approximately) reinforcing strips to all changes of direction.



Internal Corners



gcpat.hk | For technical information: asia.enq@gcpat.com

We hope the information here will be helpful. It is based on data and knowledge considered to be true and accurate, and is offered for consideration, investigation and verification by the user, but we do not warrant the results to be obtained. Please read all statements, recommendations, and suggestions in conjunction with our conditions of sale, which apply to all goods supplied by us. No statement, recommendation, or suggestion is intended for any use that would infringe any patent, copyright, or other third party right.

Bituthene is a trademark, which may be registered in the United States and/or other countries, of GCP Applied Technologies, Inc. This trademark list has been compiled using available published information as of the publication date and may not accurately reflect current trademark ownership or status.

© Copyright 2016 GCP Applied Technologies, Inc. All rights reserved.

GCP Applied Technologies Inc., 2325 Lakeview Parkway, Alpharetta, GA 30009, USA

GCP (Hong Kong) Ltd., 6 On Chuen Street, On Lok Tsuen Ind Area, Fanling, Hong Kong

This document is only current as of the last updated date stated below and is valid only for use in Hong Kong. It is important that you always refer to the currently available information at the URL below to provide the most current product information at the time of use. Additional literature such as Contractor Manuals, Technical Bulletins, Detail Drawings and detailing recommendations and other relevant documents are also available on www.gcpat.hk. Information found on other websites must not be relied upon, as they may not be up-to-date or applicable to the conditions in your location and we do not accept any responsibility for their content. If there are any conflicts or if you need more information, please contact GCP Customer Service.

Last Updated: 2025-05-15

gcpat.hk/solutions/products/bituthene-installation